

# Harbor Branch Oceanographic Institute Foundation, Inc

## Total Composite

As of September 30, 2017

Fiscal Year End: June

	Market Value (\$)	% of Portfolio	1 Mo (%)	Rank	QTD (%)	Rank	Fiscal YTD (%)	Rank	YTD (%)	Rank	1 Yr (%)	Rank	3 Yrs (%)	Rank	5 Yrs (%)	Rank	10 Yrs (%)	Rank	Return (%)	Since
<b>Total Composite</b>	<b>72,732,308</b>	<b>100.00</b>	<b>2.25</b>	<b>--</b>	<b>4.26</b>	<b>--</b>	<b>4.26</b>	<b>--</b>	<b>12.31</b>	<b>--</b>	<b>14.42</b>	<b>--</b>	<b>6.87</b>	<b>--</b>	<b>8.72</b>	<b>--</b>	<b>5.25</b>	<b>--</b>	<b>6.19</b>	<b>Dec-05</b>
Balanced Index			2.30	--	3.78	--	3.78	--	11.18	--	13.84	--	6.86	--	8.14	--	4.81	--	5.76	Dec-05
CPI+5%			0.41	--	1.46	--	1.46	--	5.48	--	6.77	--	6.09	--	6.25	--	6.72	--	6.99	Dec-05
<b>Equity Composite</b>	<b>55,233,121</b>	<b>75.94</b>	<b>2.86</b>	<b>--</b>	<b>5.32</b>	<b>--</b>	<b>5.32</b>	<b>--</b>	<b>16.11</b>	<b>--</b>	<b>19.57</b>	<b>--</b>	<b>9.54</b>	<b>--</b>	<b>12.54</b>	<b>--</b>	<b>5.66</b>	<b>--</b>	<b>6.88</b>	<b>Dec-05</b>
Balanced Index			3.09	--	4.95	--	4.95	--	14.83	--	19.13	--	9.64	--	12.35	--	5.65	--	7.07	Dec-05
<b>US Stock Large</b>	<b>31,384,228</b>	<b>43.15</b>																		
Vanguard Institutional Index I	31,384,228	43.15	2.07	57	4.48	48	4.48	48	14.21	43	18.57	46	10.79	25	14.16	31	--	--	15.90	Aug-11
S&P 500			2.06	57	4.48	47	4.48	47	14.24	43	18.61	46	10.81	25	14.22	30	7.44	36	15.94	Aug-11
<b>US Stock Small</b>	<b>10,799,400</b>	<b>14.85</b>																		
Vanguard Russell 2000 ETF	5,529,780	7.60	6.30	34	5.84	34	5.84	34	11.05	43	20.98	31	12.24	32	--	--	--	--	10.21	Sep-14
Russell 2000			6.24	36	5.67	38	5.67	38	10.94	43	20.74	35	12.18	32	13.79	44	7.85	46	10.08	Sep-14
iShares S&P SmallCap 600 Index	5,269,620	7.25	7.79	10	6.19	24	6.19	24	--	--	--	--	--	--	--	--	--	--	8.55	May-17
S&P 600 SmallCap			7.71	11	5.96	30	5.96	30	8.92	56	21.05	30	14.07	9	15.60	9	9.27	13	8.45	May-17
<b>International</b>	<b>13,049,494</b>	<b>17.94</b>																		
American Funds Europacific Growth F2	13,049,494	17.94	1.50	82	6.83	34	6.83	34	25.74	25	20.50	34	7.44	30	9.39	33	3.44	27	6.29	Dec-05
MSCI EAFE			2.49	35	5.40	64	5.40	64	19.96	79	19.10	50	5.04	70	8.38	55	1.34	66	4.26	Dec-05
<b>Fixed Income Composite</b>	<b>16,141,112</b>	<b>22.19</b>	<b>0.20</b>	<b>--</b>	<b>0.98</b>	<b>--</b>	<b>0.98</b>	<b>--</b>	<b>2.68</b>	<b>--</b>	<b>1.41</b>	<b>--</b>	<b>0.23</b>	<b>--</b>	<b>1.40</b>	<b>--</b>	<b>4.49</b>	<b>--</b>	<b>4.62</b>	<b>Dec-05</b>
Balanced Index			-0.21	--	0.56	--	0.56	--	1.87	--	0.41	--	0.13	--	0.38	--	3.47	--	3.65	Dec-05
<b>US Fixed Income</b>	<b>8,416,948</b>	<b>11.57</b>																		
Metropolitan West Total Return	4,174,798	5.74	-0.50	83	0.79	70	0.79	70	--	--	--	--	--	--	--	--	--	--	0.87	May-17
BBgBarc US Aggregate TR			-0.48	77	0.85	58	0.85	58	3.14	69	0.07	77	2.71	52	2.06	68	4.27	70	1.06	May-17
PIMCO Income Fund Inst'l	4,242,150	5.83	0.48	1	2.04	1	2.04	1	--	--	--	--	--	--	--	--	--	--	2.76	May-17
BBgBarc US Aggregate TR			-0.48	77	0.85	58	0.85	58	3.14	69	0.07	77	2.71	52	2.06	68	4.27	70	1.06	May-17
<b>US Fixed Income Short Term</b>	<b>7,698,263</b>	<b>10.58</b>																		
PIMCO Short-Term Inst'l	7,698,263	10.58	0.43	--	0.51	--	0.51	--	1.83	--	2.71	--	1.74	--	1.57	--	--	--	1.63	Aug-10
Citi 3mth Treasury Bill			0.09	--	0.26	--	0.26	--	0.56	--	0.64	--	0.29	--	0.19	--	0.42	--	0.16	Aug-10
<b>Cash</b>	<b>25,901</b>	<b>0.04</b>																		
Cash	25,901	0.04																		
<b>Special Situations</b>	<b>1,358,074</b>	<b>1.87</b>	<b>2.38</b>	<b>--</b>	<b>2.04</b>	<b>--</b>	<b>2.04</b>	<b>--</b>	<b>-3.69</b>	<b>--</b>	<b>-0.37</b>	<b>--</b>	<b>2.32</b>	<b>--</b>	<b>4.59</b>	<b>--</b>	<b>2.18</b>	<b>--</b>	<b>3.55</b>	<b>Dec-05</b>
Balanced Index			0.69	--	-3.05	--	-3.05	--	-5.47	--	-3.49	--	-0.43	--	1.46	--	0.16	--	1.63	Dec-05
Advisory Research MLP & Energy Income I	1,358,074	1.87	2.38	--	2.04	--	2.04	--	-3.96	--	-0.60	--	--	--	--	--	--	--	5.51	Nov-15
Alerian MLP TR USD			0.69	--	-3.05	--	-3.05	--	-5.62	--	-3.70	--	-12.93	--	-0.57	--	6.49	--	1.28	Nov-15

- Balanced Index = Weighted Average of S&P 500 / Russell 2000 / S&P 600 SmallCap / MSCI EAFE / BBgBarc US Aggregate TR / Citi 3mth Treasury Bill / Citi 1 Month T-Bill / Alerian MLP TR USD

- CPI+5% = Consumer Price Index+0.00407 100

- Balanced Index = Weighted Average of S&P 500 / Russell 2000 / S&P 600 SmallCap / MSCI EAFE

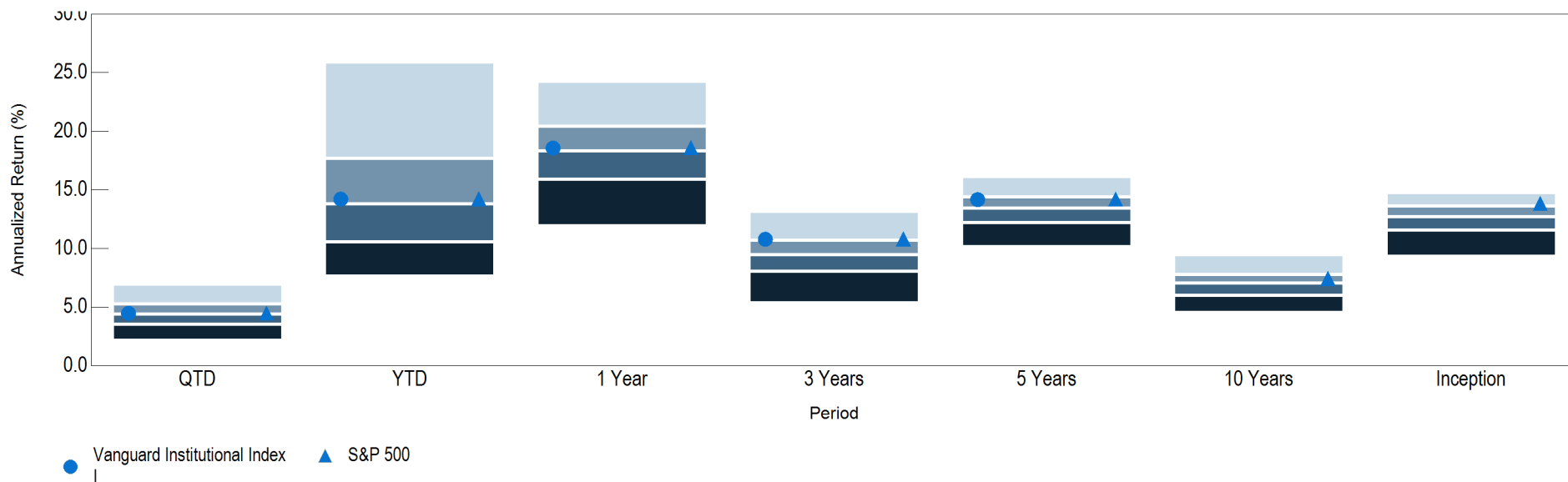
- Balanced Index = Weighted Average of BBgBarc US Aggregate TR / Citi 3mth Treasury Bill / Citi 1 Month T-Bill

- Balanced Index = Weighted Average of Alerian MLP TR USD

# Vanguard Institutional Index I

As of September 30, 2017

Universe Name: Large Cap MStar MF  
 # of Observations: 983 (9/30/2017)



## Return for Time Periods

	QTD (%)	Rank	YTD (%)	Rank	1 Yr (%)	Rank	3 Yrs (%)	Rank	5 Yrs (%)	Rank	10 Yrs (%)	Rank	Return (%)	Since
Vanguard Institutional Index I	4.48	48	14.21	43	18.57	46	10.79	25	14.16	31	--	--	15.90	Aug-11
S&P 500	4.48	47	14.24	43	18.61	46	10.81	25	14.22	30	7.44	36	15.94	Aug-11

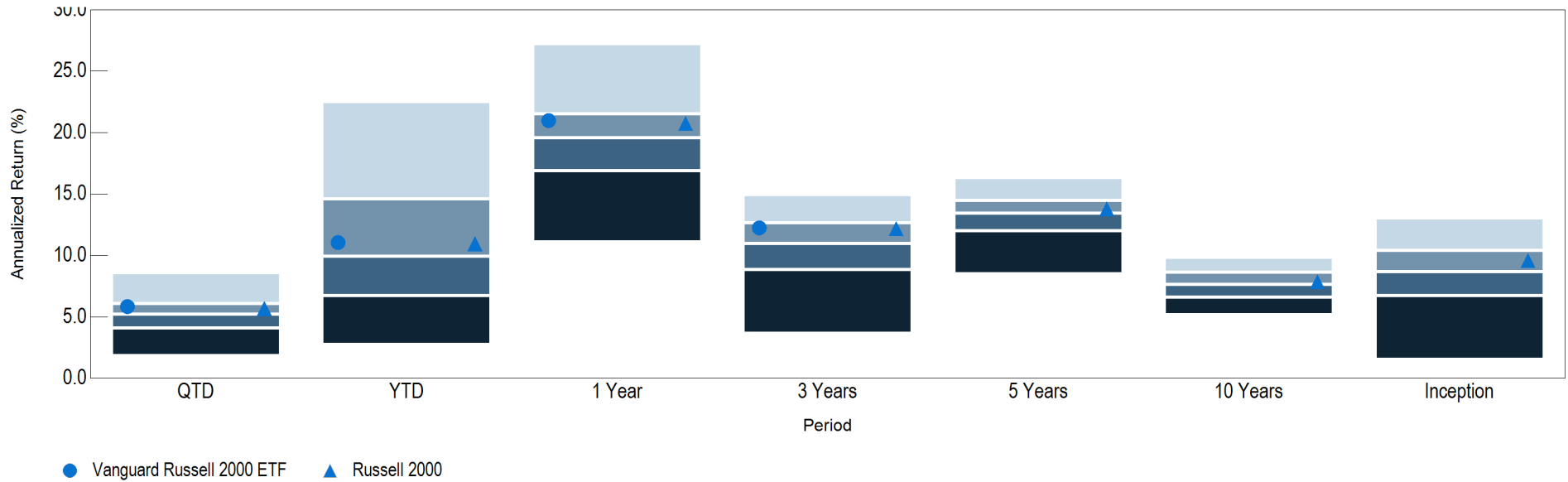
## Annual Returns

	2016 (%)	Rank	2015 (%)	Rank	2014 (%)	Rank	2013 (%)	Rank	2012 (%)	Rank	2011 (%)	Rank	2010 (%)	Rank	2009 (%)	Rank	2008 (%)	Rank	2007 (%)	Rank
Vanguard Institutional Index I	11.93	36	1.39	36	13.64	18	32.18	56	16.02	42	--	--	--	--	--	--	--	--	--	--
S&P 500	11.96	35	1.38	36	13.69	17	32.39	53	16.00	42	2.11	21	15.06	41	26.46	61	-37.00	40	5.49	60
Over/Under	-0.03		0.01		-0.05		-0.21		0.02											

# Vanguard Russell 2000 ETF

As of September 30, 2017

Universe Name: Small Cap MStar MF  
 # of Observations: 524 (9/30/2017)



### Return for Time Periods

	QTD (%)	Rank	YTD (%)	Rank	1 Yr (%)	Rank	3 Yrs (%)	Rank	5 Yrs (%)	Rank	10 Yrs (%)	Rank	Return (%)	Since
Vanguard Russell 2000 ETF	5.84	34	11.05	43	20.98	31	12.24	32	--	--	--	--	10.21	Sep-14
Russell 2000	5.67	38	10.94	43	20.74	35	12.18	32	13.79	44	7.85	46	10.08	Sep-14

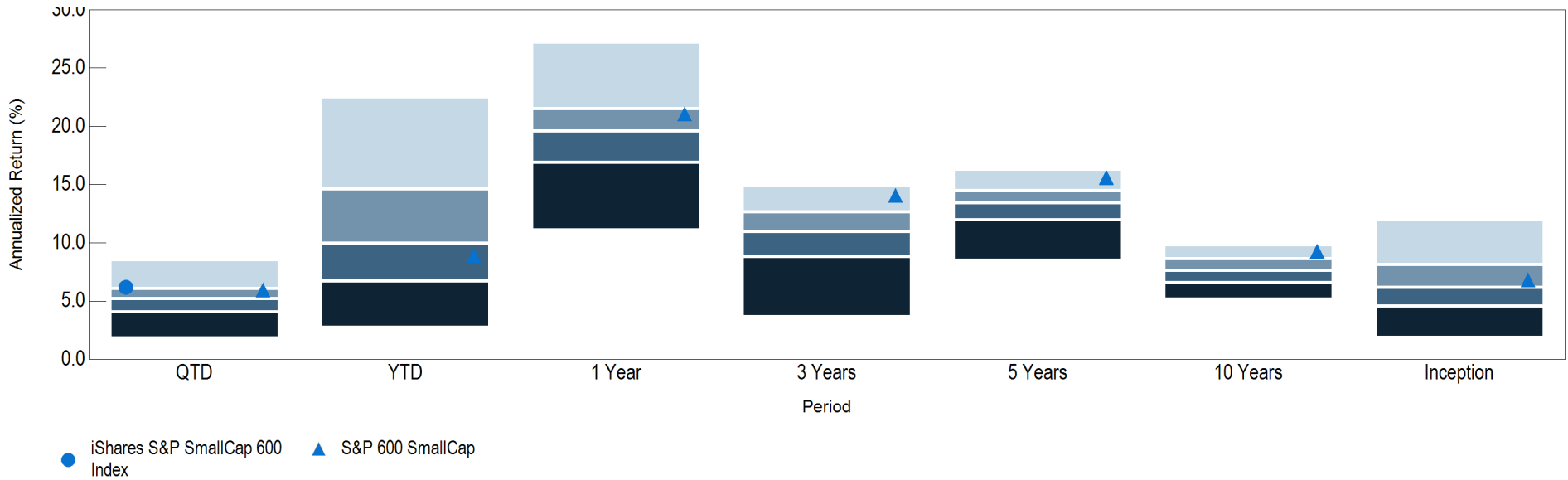
### Annual Returns

	2016 (%)	Rank	2015 (%)	Rank	2014 (%)	Rank	2013 (%)	Rank	2012 (%)	Rank	2011 (%)	Rank	2010 (%)	Rank	2009 (%)	Rank	2008 (%)	Rank	2007 (%)	Rank
Vanguard Russell 2000 ETF	21.36	37	-4.41	58	--	--	--	--	--	--	--	--	--	--	--	--	--	--	--	--
Russell 2000	21.31	38	-4.41	58	4.90	45	38.82	50	16.35	35	-4.18	64	26.85	50	27.17	74	-33.79	32	-1.57	64
Over/Under	0.05		0.00																	

# iShares S&P SmallCap 600 Index

As of September 30, 2017

Universe Name: Small Cap MStar MF  
 # of Observations: 524 (9/30/2017)



### Return for Time Periods

	QTD (%)	Rank	YTD (%)	Rank	1 Yr (%)	Rank	3 Yrs (%)	Rank	5 Yrs (%)	Rank	10 Yrs (%)	Rank	Return (%)	Since
iShares S&P SmallCap 600 Index	6.19	24	--	--	--	--	--	--	--	--	--	--	8.55	May-17
S&P 600 SmallCap	5.96	30	8.92	56	21.05	30	14.07	9	15.60	9	9.27	13	8.45	May-17

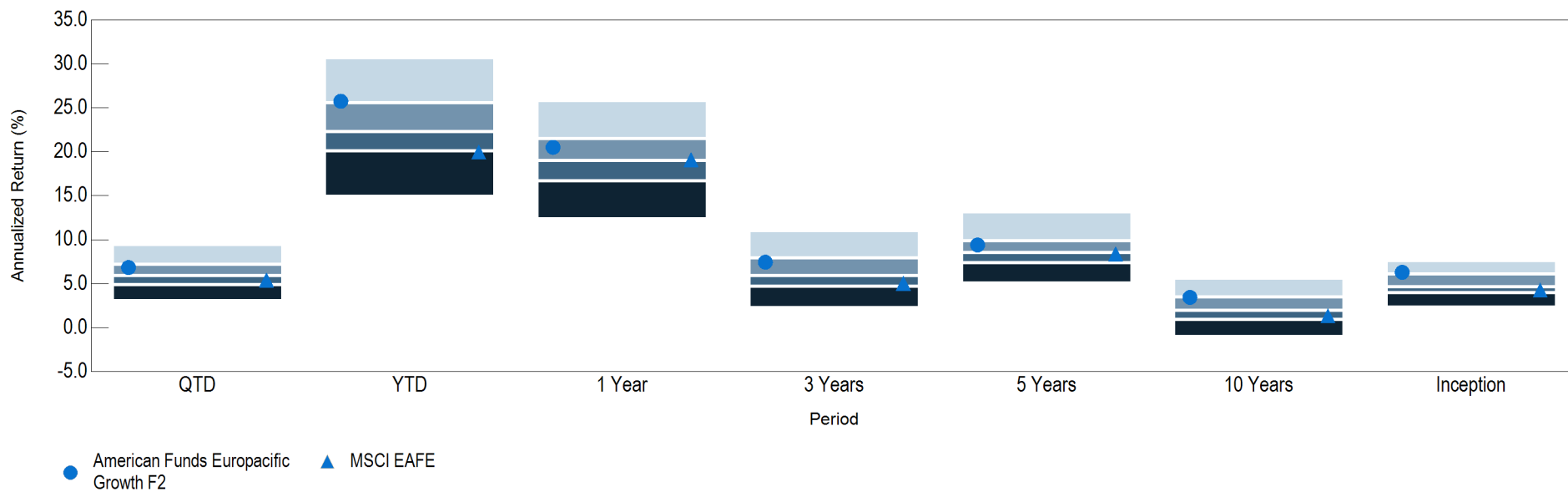
### Annual Returns

	2016 (%)	Rank	2015 (%)	Rank	2014 (%)	Rank	2013 (%)	Rank	2012 (%)	Rank	2011 (%)	Rank	2010 (%)	Rank	2009 (%)	Rank	2008 (%)	Rank	2007 (%)	Rank
iShares S&P SmallCap 600 Index	--	--	--	--	--	--	--	--	--	--	--	--	--	--	--	--	--	--	--	--
S&P 600 SmallCap	26.56	14	-1.97	28	5.76	32	41.31	35	16.33	36	1.02	16	26.31	56	25.57	80	-31.07	20	-0.30	59
Over/Under																				

# American Funds Europacific Growth F2

As of September 30, 2017

Universe Name: Foreign MStar MF  
 # of Observations: 468 (9/30/2017)



### Return for Time Periods

	QTD (%)	Rank	YTD (%)	Rank	1 Yr (%)	Rank	3 Yrs (%)	Rank	5 Yrs (%)	Rank	10 Yrs (%)	Rank	Return (%)	Since
American Funds Europacific Growth F2	6.83	34	25.74	25	20.50	34	7.44	30	9.39	33	3.44	27	6.29	Dec-05
MSCI EAFE	5.40	64	19.96	79	19.10	50	5.04	70	8.38	55	1.34	66	4.26	Dec-05

### Annual Returns

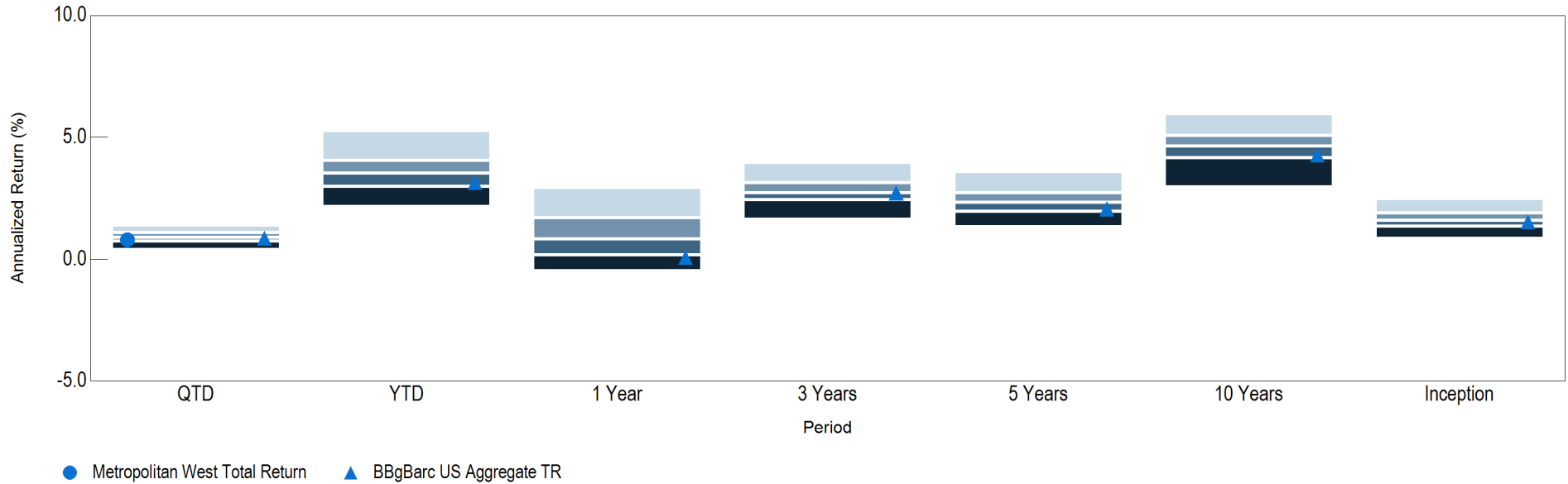
	2016 (%)	Rank	2015 (%)	Rank	2014 (%)	Rank	2013 (%)	Rank	2012 (%)	Rank	2011 (%)	Rank	2010 (%)	Rank	2009 (%)	Rank	2008 (%)	Rank	2007 (%)	Rank
American Funds Europacific Growth F2	0.93	49	-0.61	57	-2.42	21	20.43	61	19.81	39	-13.53	53	9.00	71	39.10	30	-40.52	15	21.32	11
MSCI EAFE	1.00	48	-0.81	60	-4.90	50	22.78	37	17.32	69	-12.14	38	7.75	80	31.78	57	-43.38	41	11.17	57
Over/Under	-0.07		0.20		2.48		-2.35		2.49		-1.39		1.25		7.32		2.86		10.15	

# Metropolitan West Total Return

As of September 30, 2017

Universe Name: Intermediate-Term Bond MStar MF

# of Observations: 261 (9/30/2017)



### Return for Time Periods

	QTD (%)	Rank	YTD (%)	Rank	1 Yr (%)	Rank	3 Yrs (%)	Rank	5 Yrs (%)	Rank	10 Yrs (%)	Rank	Return (%)	Since
Metropolitan West Total Return	0.79	70	--	--	--	--	--	--	--	--	--	--	0.87	May-17
BBgBarc US Aggregate TR	0.85	58	3.14	69	0.07	77	2.71	52	2.06	68	4.27	70	1.06	May-17

### Annual Returns

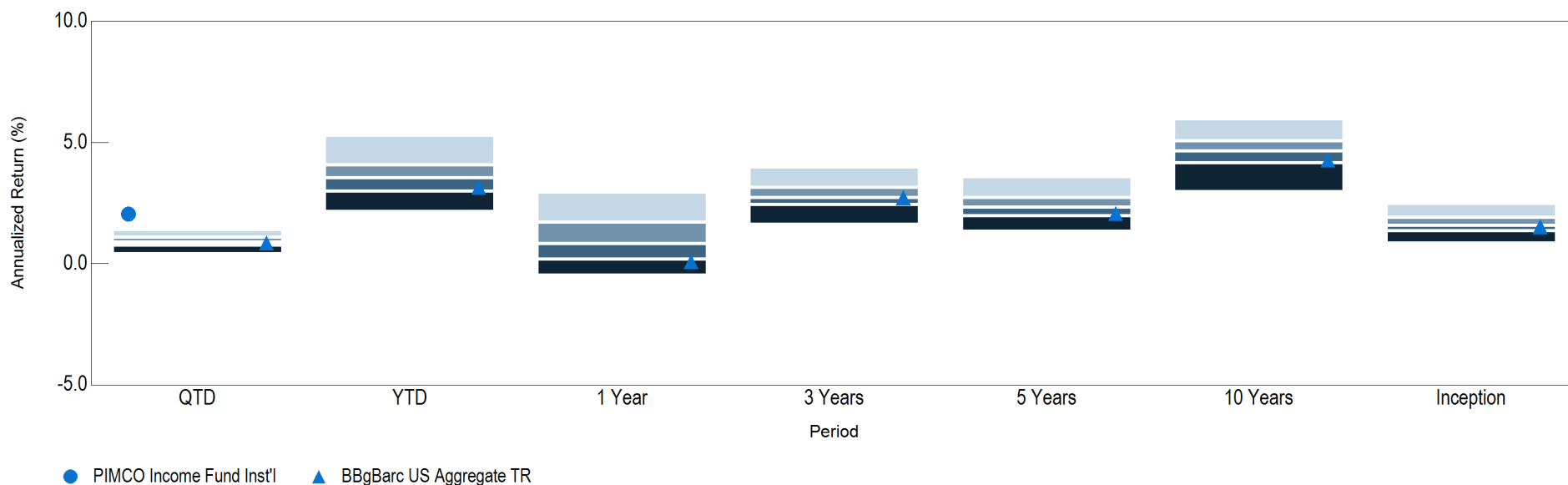
	2016 (%)	Rank	2015 (%)	Rank	2014 (%)	Rank	2013 (%)	Rank	2012 (%)	Rank	2011 (%)	Rank	2010 (%)	Rank	2009 (%)	Rank	2008 (%)	Rank	2007 (%)	Rank
Metropolitan West Total Return	--	--	--	--	--	--	--	--	--	--	--	--	--	--	--	--	--	--	--	--
BBgBarc US Aggregate TR	2.65	69	0.55	29	5.97	38	-2.02	76	4.21	86	7.84	17	6.54	81	5.93	92	5.24	10	6.97	15
Over/Under																				

# PIMCO Income Fund Inst'l

As of September 30, 2017

Universe Name: Intermediate-Term Bond MStar MF

# of Observations: 261 (9/30/2017)



### Return for Time Periods

	QTD (%)	Rank	YTD (%)	Rank	1 Yr (%)	Rank	3 Yrs (%)	Rank	5 Yrs (%)	Rank	10 Yrs (%)	Rank	Return (%)	Since
PIMCO Income Fund Inst'l	2.04	1	--	--	--	--	--	--	--	--	--	--	2.76	May-17
BBgBarc US Aggregate TR	0.85	58	3.14	69	0.07	77	2.71	52	2.06	68	4.27	70	1.06	May-17

### Annual Returns

	2016 (%)	Rank	2015 (%)	Rank	2014 (%)	Rank	2013 (%)	Rank	2012 (%)	Rank	2011 (%)	Rank	2010 (%)	Rank	2009 (%)	Rank	2008 (%)	Rank	2007 (%)	Rank
PIMCO Income Fund Inst'l	--	--	--	--	--	--	--	--	--	--	--	--	--	--	--	--	--	--	--	--
BBgBarc US Aggregate TR	<u>2.65</u>	69	<u>0.55</u>	29	<u>5.97</u>	38	<u>-2.02</u>	76	<u>4.21</u>	86	<u>7.84</u>	17	<u>6.54</u>	81	<u>5.93</u>	92	<u>5.24</u>	10	<u>6.97</u>	15

Over/Under